

## Reception Weekly Newsletter

Monday 22<sup>nd</sup> January 2018



On our topic of Homes, we visited Norwich Castle Museum. It was very exciting because we travelled on the coach and had look around a real castle. We learnt about knights, how people lived in a castle and we had a tour of the castle keep. When we came back we drew story maps of our visit, we drew pictures and we used our phonic knowledge to write about it.



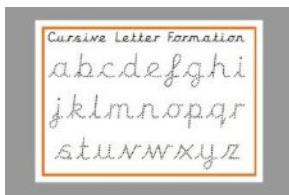
In phonics, the children were assessed, from the results they have been divided into ability groups. This is to help children work at their own levels confidently and any gaps that a child may have will be easily be picked up by the teacher.

The groups are::

- In Miss Buxton's group, the children are recapping over Phase 1 and Phase 2 letters and sounds. They have been introduced to s a t p i m n d letters & sounds. They are practicing oral blending and segmenting (putting the sounds together to make a word ie d-o-g to make dog). The children are learning to read high frequency words - is it in at.
- In Mrs Wenn/Miss Marshall's group, the children are recapping over Phase 2 and are focusing on blending (putting sounds together to read) and segmenting (separating the sounds to write the word). They are recapping over the tricky words - I no to go into the.
- In Mrs Sharma's group, the children have been introduced to j v w x y z/zz qu. They have been introduced to tricky words - he she. The children are learning to read and write simple captions and sentences with the tricky words they have learnt so far.

In Reception, we are now practicing handwriting twice a week. We are making sure that we "pick & flick" when holding a pencil. We always begin writing the "whoosh" on the line and we say the patten when forming the letter. This helps us to write the letter correctly.

Please ask the Reception class teachers if you would like the letter formation sheet so that you can help your child to practice letter formation at home.



From next week, there will be a change to the self-registration in the morning. Instead of using the pebbles, the children will need to register by practicing to write their names. We will be thankful if you could support your child in making sure they form the letters correctly and then rubbing their names off ready for the next day.

In Maths we have been focusing on counting forwards and backwards. We have been working out what is 1 more and 1 less than a given number. We have been practicing to say the calculation e.g. 5 and 1 more is 6, 4 and 1 less is 3.



We also had a go at recording the calculations. This week we have been learning to add two groups of objects and finding the total. We practiced saying the calculation ie 4 add 2 makes..



The school nurse has been in school this week. They were carrying out hearing, sight, weight and height tests. All the parents were sent a letter informing them of the results. These results are treated as confidential; the school is not given the information. If your child's results show, for some reason that he/she is hard of hearing, please inform the class teacher so that they can take the necessary steps to make sure that he/she can be heard ie making sure the child sits near the front so they can hear.

**At home, you could:**

- Use the free family Castle Museum tickets to visit it again and learn more about castle life.
- Practise speaking in full sentences.
- See how quickly you can work out 1 more or 1 less.
- Learn more about castles on the internet.
- Encourage your child to practice writing their name using the correct formation.

**General reminders:**

Rowan class children are swimming every Thursday this half term. Please ensure your child has swimming costume/trunks, swimming hat and a towel. They all need to be in a named a bag. Please ensure your child does not have any jewellery (eg earrings) on swimming days. They will not be allowed to swim if they do.  
Silver class will be swimming next term.

Please ensure that your child's name is on the reading book mark before your post it in the Reception Box in the hall.

PE is every Monday. Please ensure your child has a PE kit in school on that day. PE kit consists of tee-shirt and shorts in a bag.